



**Diemme
Filtration**



Solid-liquid separation technology for industrial processes

Pumps

**A brand of
Aqseptence Group**

Piston-membran Pumps

Applications specially indicated for:

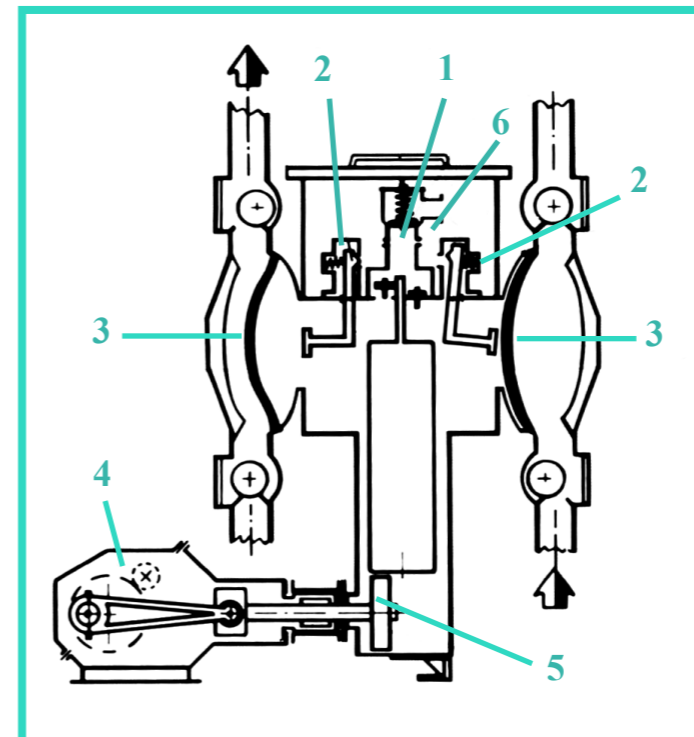
- Abrasive or corrosive liquids;
- Filter Press Feed;
- Service where either delivery or suction and/or discharge pressure varied;
- Heavy duty;
- Low noise duty.

Study construction

- "Total access" for easy inspection and maintenance of any part;
- Equipped with pulsation dumpers and instruments;
- Sensing electrode for premature detaction of membrane leakages (optional);
- Ball valves;
- Membrane of suitable to-service material;
- Belt and pulley coupling;
- Assembled with drive unit on a common frame.



DM/PM



OPERATING PRINCIPLE

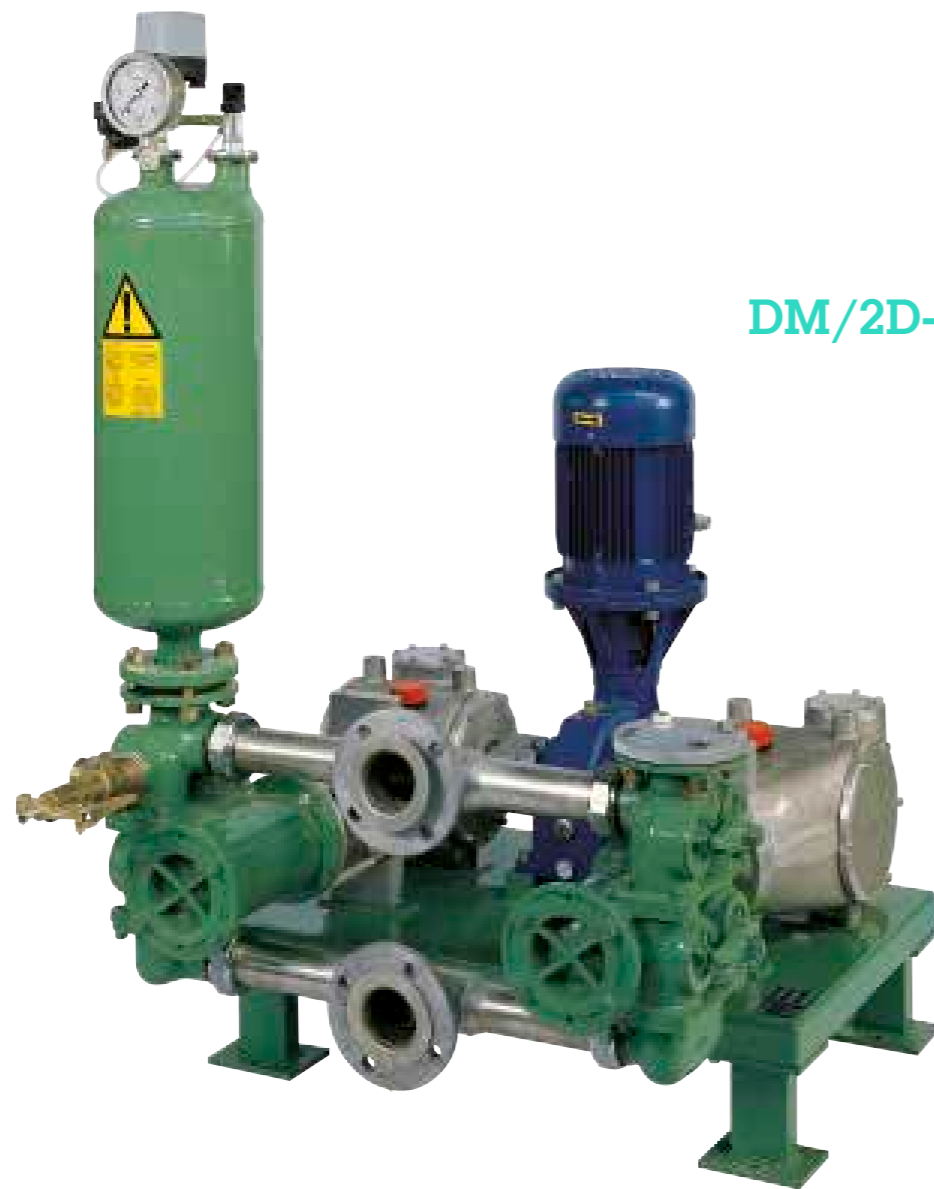
- 1 . Pressure relieve valve;
- 2 . Gear box;
- 3 . Make up valve;
- 4 . Membrane;
- 5 . Piston;
- 6 . Oil Tank.

Model	Capacity m ³ /h	Pressure bar	Speed rpm	Piston n°	Membrane n°	Ball Valve n°	Electric Motor kW	Speed rpm	Length mm	Width mm	Height mm	Weight kg	Suction Conn.	Discharge Conn.
DMPM-10	0 - 10	0 - 16	43	1	1	2	11	1450	2100	920	2530	1400	PN10,DN100	PN16,DN100
DMPM-15	0 - 15	0 - 16	58	1	1	2	11	1450	2100	920	2530	1400	PN10,DN100	PN16,DN100
DMPM-20	0 - 20	0 - 16	43	1	2	4	15	1450	2100	920	2530	1400	PN10,DN100	PN16,DN100
DMPM-30	0 - 30	0 - 16	58	1	2	4	18,5	1450	2100	920	2530	1400	PN10,DN100	PN16,DN100

Piston Pumps

Characteristics:

- Simple design and sturdy construction for continuous heavy duty;
- Piston long stroke and low frequency;
- Ball valves;
- Easy access for easy maintenance service;
- Pulsation dampener and pressure relieve valve;
- Control instruments for automatic operation;
- Special material on request.



DM/2D- FC



DM/046-70



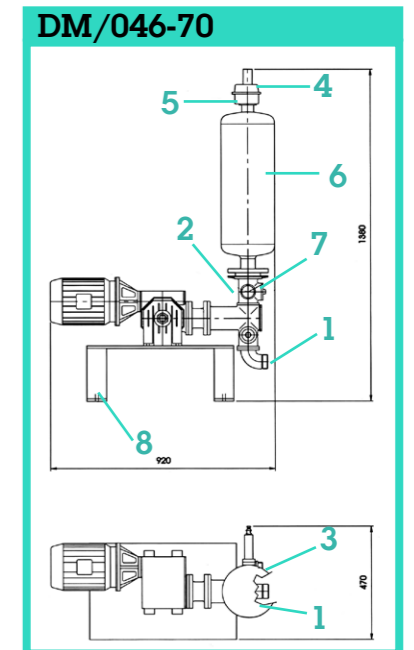
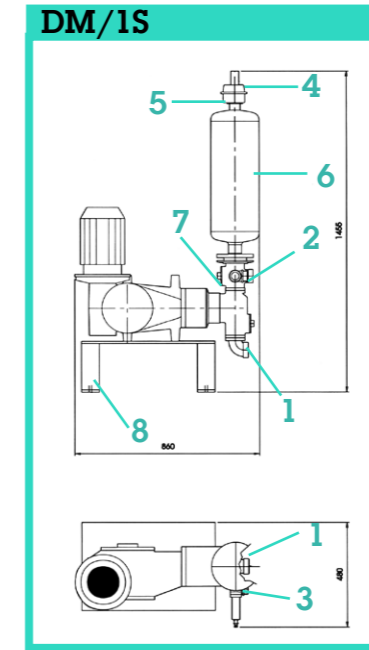
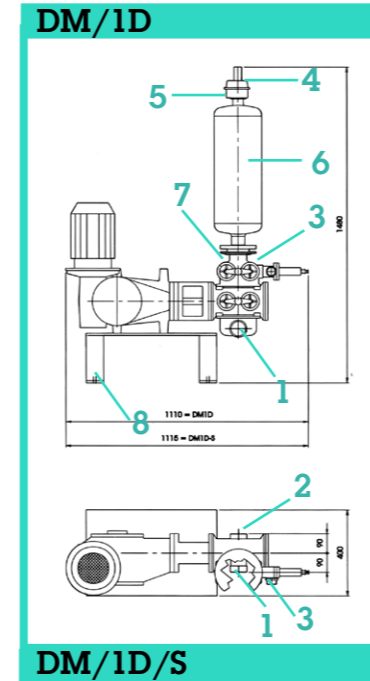
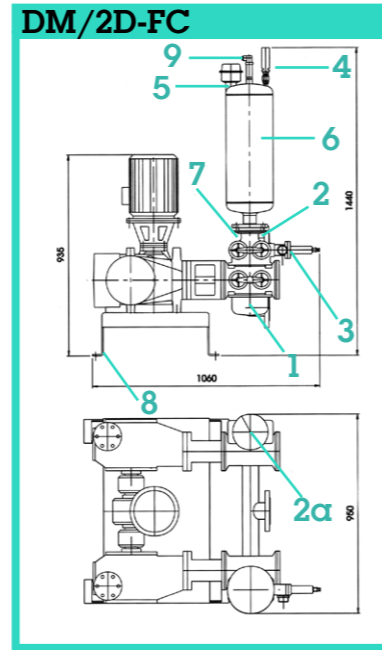
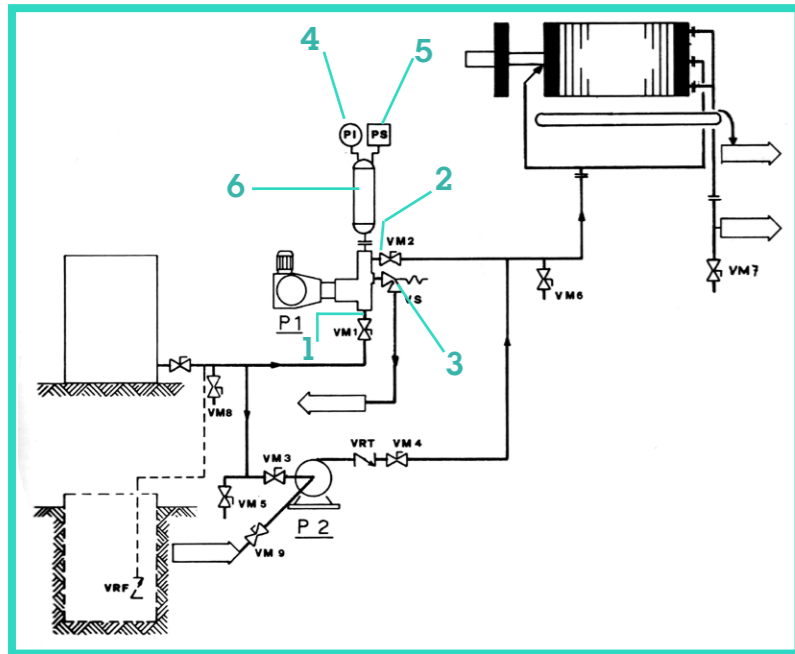
DM/1D



DM/1S

Pumps

Piston Pumps operating principles



Legend:

- 1 Suction
- 2 Discharge
- 2α Add. Discharge
- 3 Press. Safety valve
- 4 Press. gauge (0-25 bar)
- 5 Press switch (0-15 bar) Press dumper
- 6 Inspection Port
- 8 Fastening Holes
- 9 Frequency converter

Model	Capacity m ³ /h	Pressure bar	Piston (action) n°	Piston n°	Piston Ø mm	Stroke mm	Frequency 1/min.	Electric Motor	Electric Motor Power (kW)	Electric Motor Speed (rpm)	Length mm	Width mm	Height mm	Weight kg	Inlet Connection	Outlet Connection	Safety valve Connection
DM/2D-FC	0 - 12	12	2	2	100	80	82,5	with inverter	4	1450	1060	950	1440	350	FL.S.O. DN-65	FL.S.O. DN-65	1 ½ °GAS (M)
DM/1D	4.0	12	2	1	100	80	51	-	3.0	1450	1110	420	1480	160	2 ½ °GAS (F)	2 ½ °GAS (M)	1 ½ °GAS (M)
DM/1D/S	5.0	12	2	1	100	80	72	-	4.0	1450	1115	420	1480	174	2 ½ °GAS (F)	2 ½ °GAS (M)	1 ½ °GAS (M)
DM/1S	2.5	12	1	1	100	80	72	-	3.0	1450	860	480	1455	140	2 ½ °GAS (F)	2 ½ °GAS (M)	1 ½ °GAS (M)
DM/046-70	1.2	12	1	1	70	70	72	-	1.5	1450	890	400	1380	60	2 ½ °GAS (F)	2 ½ °GAS (M)	1 ½ °GAS (M)

Aqseptence Group srl
Filtration and Thickening Systems

Via Gessi 16
48022 Lugo
Italy
Phone +39 0545 20611
Fax +39 0545 30358
info@diemmefiltration.com

www.diemmefiltration.com

Follow us on

